



**A local NGO dedicated to the support of sustainable socio-economic development through research, training, education and community development by promoting farmer-led activities, networking, sustainable agriculture, and natural resources management.**

## **Integrated Farming and Marketing Systems-2**

### **Background**

The CRS Agriculture program has been working in Cambodia since 1996. CRS began working in Svay Rieng Province with support from McKnight Foundation and Caritas New Zealand by introducing and adapting new technologies suitable for the predominant paddy rice mono-cropping system of Cambodia. These efforts were very successful in terms of training farmers in new technologies and improving the capacity and technical skills of local staff, introducing improved varieties, promoting diversified farming systems at the homestead level, and helping the farmers to move towards an improved food security situation. This good experience was expanded through the Integrated Farming and Marketing Systems (IFMS) within the Svay Rieng province and part of the Prey Veng province, by partnering with five local NGOs; building community-based groups such as the Farmer Trainers Association and farmer interest groups; working with poor farm families; and ensuring the involvement of both women and men. The expansion focused on replicating the diversified agricultural production system into the rice fields of more than 7,000 farming families, incorporating a market orientation for farm production by linking farmers to local traders for both agricultural inputs and outputs, improving the management of available local resources, and developing a strong and economically viable network of small rural enterprises for inputs and services demanded by the local communities. This experience was also supported by the McKnight Foundation, with significant funding from the United States Department of Agriculture (USDA), and CRS own resources.

The current IFMS program, in which the McKnight support is estimated to conclude in March 2007, has increased the capacity of community-based organizations in Svay Rieng to take the lead in development efforts to reduce poverty and to promote communities' participation in their own development. CRS has provided technical and institutional support to a range of local non-governmental and community-based organizations: pagoda-based wild fish management associations, farmer groups, the Farmer Trainer Associations, and even commune councils (which have benefited from peace-building and conflict resolution training). CRS and our partner NGOs have introduced new agricultural techniques to poor farmers to improve agricultural production and natural resource management, including: improved rice production, integrated rice-fish production, vegetable production, small animal production, aquaculture, cash crop production, fruit tree production, soil improvement and farmer-to-farmer extension & exchange visits. Finally, CRS and its partners have improved farmer access to markets through market research, value-chain analysis and production for specific markets, support of market information systems, experimentation with different marketing systems, and small rural business development (e.g., fish hatcheries and village livestock agents).

Based on the success of the IFMS program, CRS wanted to expand this approach to other provinces with similar agro-ecological, social and economic conditions. For this purpose, in April 2005, a group of four CRS staff implemented a quick assessment of the situation in the provinces along the Tonle Sap, where agriculture is predominantly dependent on the paddy rice mono-crop system, and are subject to the recurrent annual flooding and dry periods. As a result, Kampong Thom and Siem Reap were selected as both provinces have been identified by the Government of Cambodia and World Food Program as particularly poor and food insecure, with the percentage of children under 5 who are underweight and/or stunted greater than the national average, and because the CRS team confirmed that agricultural practices in the poorer communes of these provinces are significantly behind the agricultural practices of farmers currently assisted by the IFMS Program in Svay Rieng and Prey Veng. This situation is observed particularly in communities farther from the main roads and from the lake Tonle Sap, where

farmers did not have any improvements of their farming systems, not even at the homestead level.

### **Purpose of Project**

#### **Project Goal:**

To improve the livelihoods of vulnerable rural households in Siem Reap province.

#### **Strategic Objective 1:**

Increase and diversify farm productivity through extension of environmentally-appropriate technical assistance to 1,500 farmers.

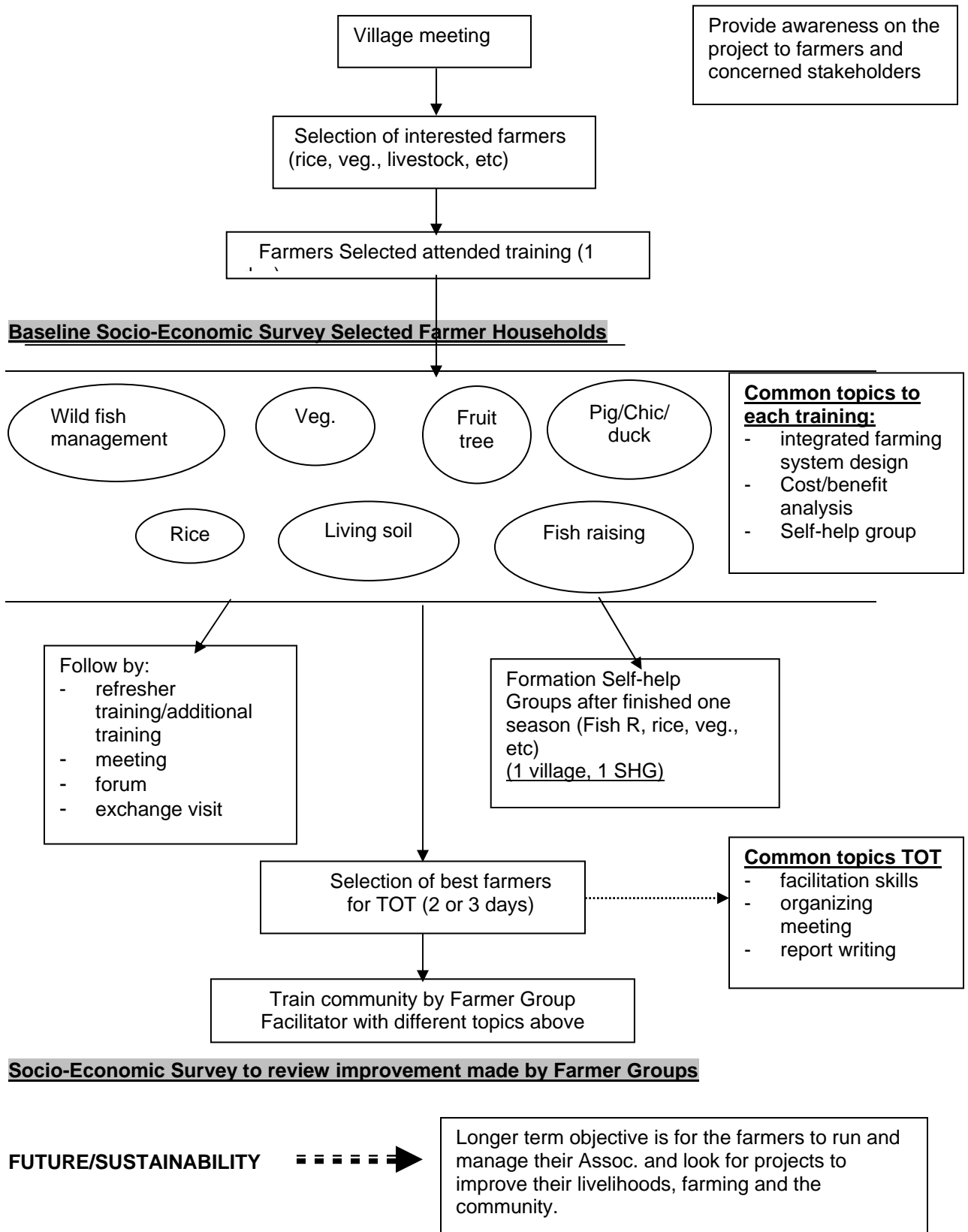
#### **Strategic Objective 2:**

Improve agricultural marketing mechanisms by enhancing marketing/enterprise development skills of 1,000 farmers and agro-entrepreneurs, and increase access to key business development services for farmers and rural businesses.

### **Key Results**

- Intermediate Result 1.1: Agricultural production and productivity are increased and diversified, both for food security and income.
- Intermediate Result 1.2: Farmers manage natural resources more effectively in a way that contributes to sustainable livelihoods.
- Intermediate Result 2.1: Farmers have a better understanding of the opportunities offered by improved access to markets and different marketing mechanisms.
- Intermediate Result 2.2: Farmers experiment with different marketing opportunities.

**Main Activities**



**Contributing Donors**

Catholic Relief Services (CRS-USCC) and McKnight Foundation.

**Duration**

August 2007 to July 2010.

**Total Budget**

97,499.85.00USD.

**Location**

Siem Reap province

**Contacts**

Sours Sokha, Programme Coordinator, E-mail: [pedigree.sk@online.com.kh](mailto:pedigree.sk@online.com.kh)

Long Vannara, Project Team Leader, E-mail: [vannaralong@yahoo.com](mailto:vannaralong@yahoo.com)

Pou Sovann, Executive Director, E-mail: [srerkhmer@online.com.kh](mailto:srerkhmer@online.com.kh)

Tel: (855-23) 210-217

Fax: (855-23) 220-598

Website: [www.srerkhmer-cambodia.org](http://www.srerkhmer-cambodia.org)